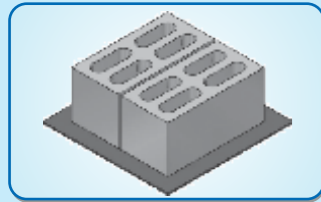
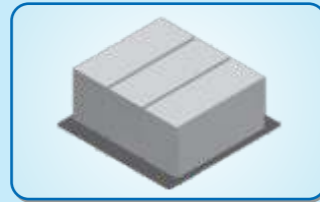


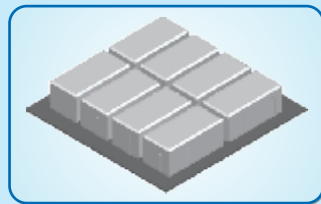
PALLET SIZE: 508x508x6mm
Model SPM 20



Hollow/
 Solid Block
 400x200x200 mm
 (2) at a time
4,500 per 8 hours*



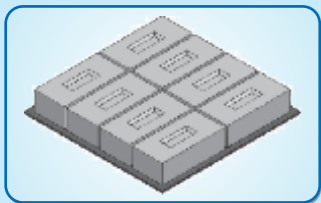
Hollow/
 Solid Block
 400x150x200 mm
 (3) at a time
6,750 per 8 hours*



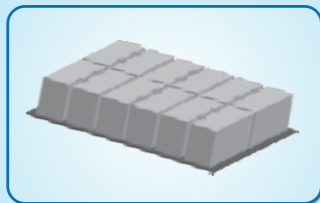
Rectangular
 Brick Paver
 200x100x80 mm
 (8) at a time
15,000 per 8 hours*



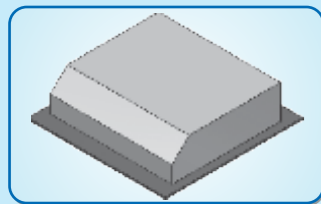
Unistone Paver
 225x112.5x100 mm
 (8) at a time
15,000 per 8 hours*



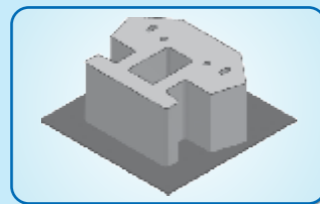
Flyash Brick
 230x110x70 mm
 (8) at a time
20,000 per 8 hours*



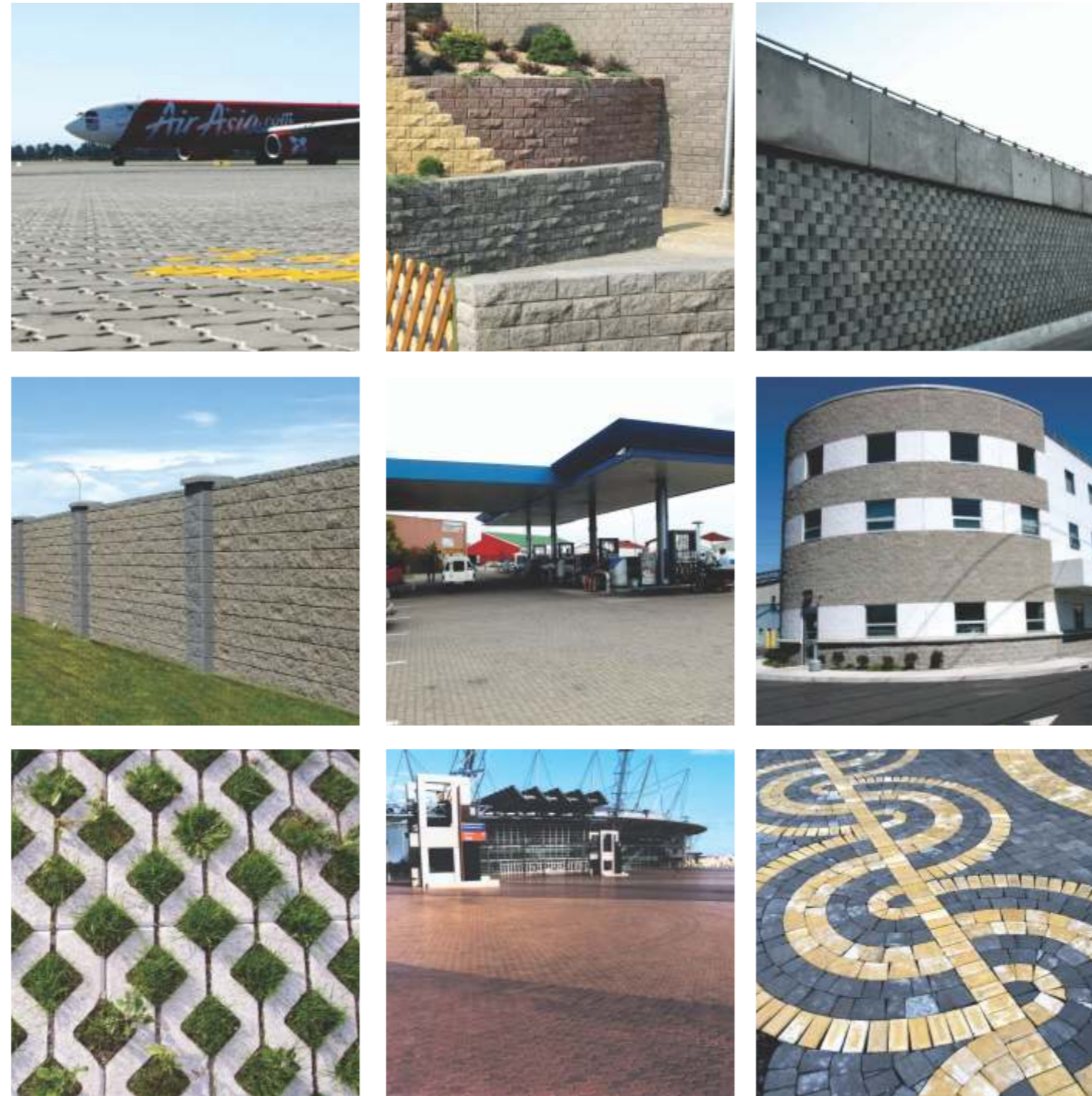
Flyash Brick (On Edge)
 230x110x70 mm
 (12) at a time
30,000 per 8 hours*



Kerbstone
 400x450x150 mm
 (1) at a time
1,500 per 8 hours*



Retaining Wall Block
 450x300x200 mm
 (1) at a time
2000 per 8 hours*



Columbia
 MACHINE ENGINEERING (I) PVT. LTD.

**State of the art Columbia Technology at
 an Affordable Price for Maximum Returns**



Columbia
 MACHINE ENGINEERING (I) PVT. LTD.

1, Rahimtoola House, 7, Homji street,
 Fort, Mumbai - 400 001, India.
 Phone: +91-22-6743 4330 -31
 Email: info@colmac.in, sales@colmac.in
 www.colmac.in, www.colmac.com
A Subsidiary of Columbia Machine, Inc. USA



CONCRETE PRODUCT SOLUTIONS
MODEL SPM 20

www.colmac.in

*@ 85% Production efficiency

CONCRETE BLOCK PLANT

Model SPM 20

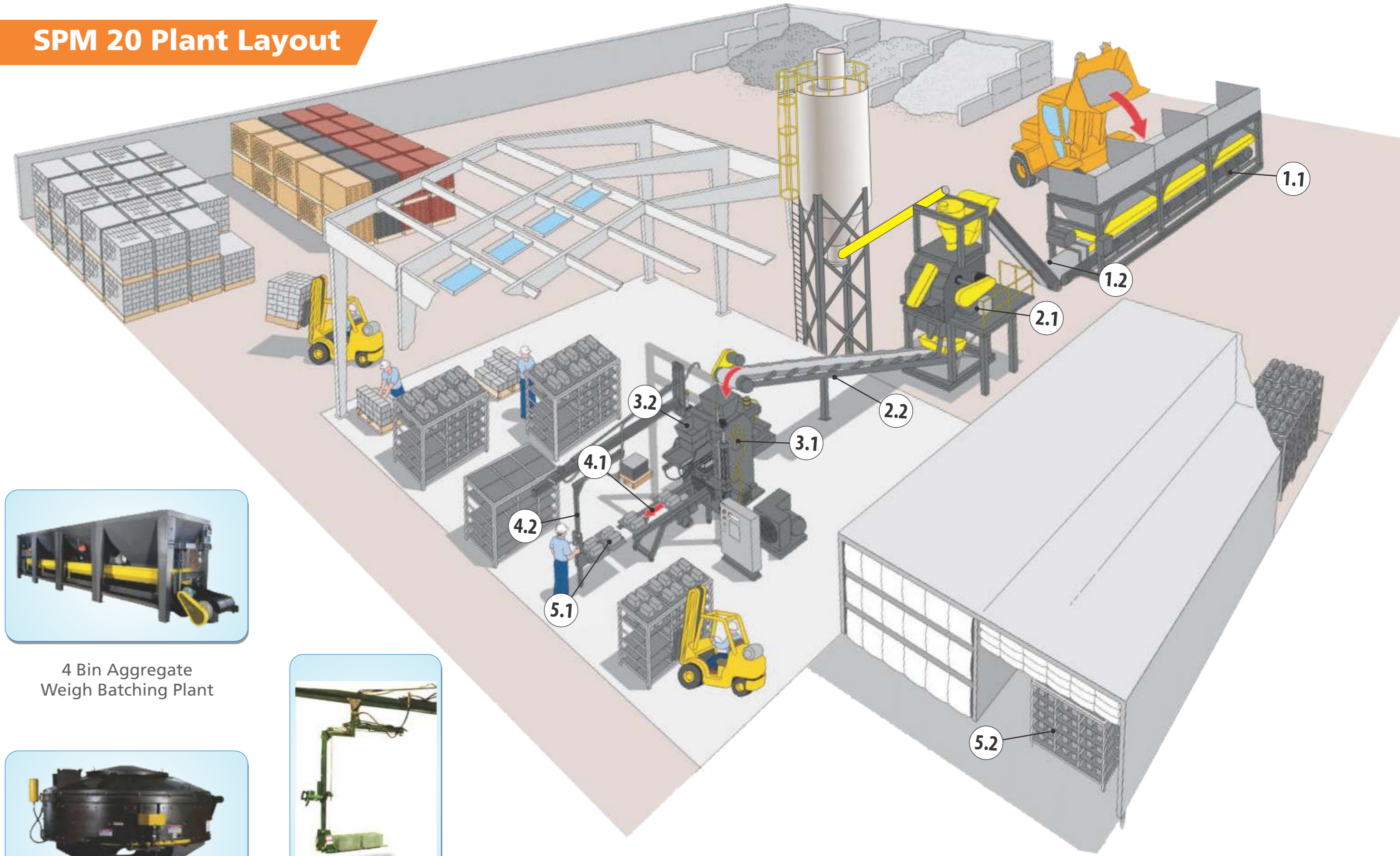
- High strength product
- 20% Lower cement consumption
- Accurate height control ($\pm 0.5\text{mm}$)
- Uniform density
- Fast cycle times
- 50% Longer mould life



Model SPM 20 Concrete Block Plant Specifications

ITEM	DESCRIPTION	POWER (KW)
1.1	4 Bin Aggregate Weigh Batching Plant 6cu.m. per bin storage of aggregates and sand for discharge on gathering belt conveyor for weighing	6
1.2	Inclined Aggregate Belt Conveyor Designed for feed aggregates and sand from weigh batching plant to mixer	5
2.1	Planetary / Pan Mixer Designed to mix up to 0.5m ³ of aggregates and cement	32
2.2	Inclined Mud Belt Conveyor Designed to feed concrete mix from mixer to concrete products machine	3.7/ 5.5
3.1	Model SPM 20 Concrete Block Plant Designed to produce concrete products on steel pallets of size 508mm x 508mm. Max. product height is 225mm	30.5
3.2	Front Feed Drawer Assembly Designed to feed face mix layer for colored paver products on Model SPM 20	-
4.1	Green Product Rollaway Designed to receive pallets of green product from machine and hold for loading into curing racks	0.75
4.2	Hydraulic Offbearer with Support Structure Designed to pick up two pallet loads of products at a time for loading into curing racks	-
5.1	Steel Production Pallets 508mm x 508mm x 6mm Designed to hold concrete products during production, curing and handling	-
5.2	Steel Curing Racks For storage of concrete products on pallets during curing process	-

SPM 20 Plant Layout



4 Bin Aggregate Weigh Batching Plant



Planetary Mixer



Hydraulic Offbearer