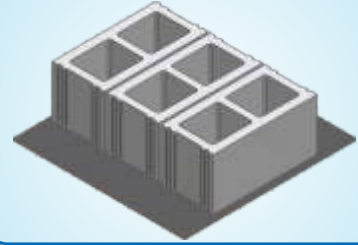
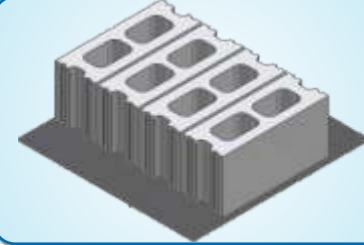


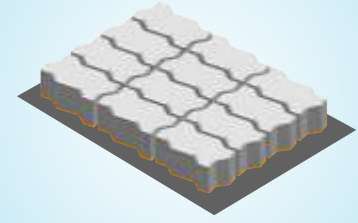
PALLET SIZE: 750x600x8mm
Model SPM 30



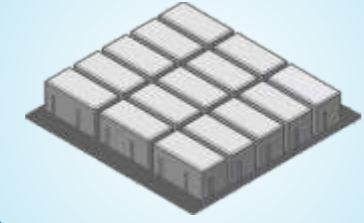
Hollow/
Solid Block
400x200x200 mm
(3) at a time
7,500 per 8 hours*



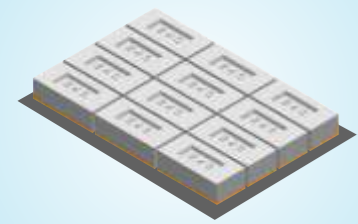
Hollow/
Solid Block
400x150x200 mm
(4) at a time
10,000 per 8 hours*



Unistone Paver
225x112.5x80mm
(12) at a time
30,000 per 8 hours*



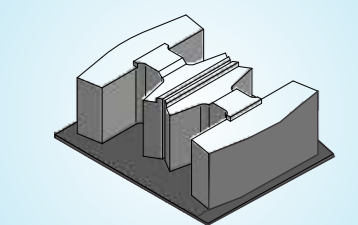
Rectangular
Brick Paver
200x100x80 mm
(15) at a time
38,000 per 8 hours*



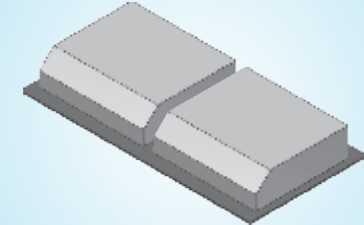
Flyash Brick
(With Frog)
230x110x70 mm
(12) at a time
36,000 per 8 hours*



Flyash Brick (On Edge)
230x110x70 mm
(18) at a time
54,000 per 8 hours*



Retaining
Wall Block
450x300x200 mm
(2) at a time
4000 per 8 hours*



KerbStone
400x325x165 mm
(2) at a time
5,000 per 8 hours*

*@ 90% Production Efficiency



Columbia
MACHINE ENGINEERING (I) PVT. LTD.

1, Rahimtoola House, 7, Homji street,
Fort, Mumbai - 400 001, India.
Phone: +91-22-6743 4330 -31
Email: info@colmac.in, sales@colmac.in
www.colmac.in, www.colmac.com
A Subsidiary of Columbia Machine, Inc. USA



Columbia
MACHINE ENGINEERING (I) PVT. LTD.



**With Automatic Rack and Pallet
Handling with Product Cubing**



CONCRETE PRODUCT SOLUTIONS
MODEL SPM 30

www.colmac.in

CONCRETE BLOCK PLANT

Model SPM 30

- Rugged Construction
- High Productivity
- Automatic Rack and pallet handling system
- Automated product Cubing with stretch wrapping
- Factory Shed - 90x20 m
- Curing Chamber - 30x20 m



Model SPM 30 Concrete Block Plant Specifications

ITEM	DESCRIPTION	POWER (KW)
1.1	4 nos. Aggregate Storage Bins 6 cu.m. bin each for bulk storage of sand and aggregate material	4.3
1.3	Automatic Cement Feeding and Batching System Screw Conveyor for Feeding Cement automatically from Holding Hopper / Silo to Cement Weigh Batcher	5.5
1.4	Inclined Aggregate Belt Conveyor Designed to convey sand & aggregate to Concrete Product Machine	3.7
1.5	Planetary Pan Mixer Model PLM 1125/750 Designed to mix up aggregate & cement with output of 0.75 cu.m concrete per batch.	31.5
2.1	Mud Belt Conveyor for Mixer Designed to feed concrete mix from Mixer to SPM 30 Machine	3.7
2.2	Concrete Products Machine Model SPM 30 Designed to produce concrete products on steel pallets of size 750x600mm	34.25
2.3	Automatic Rack Loader and Unloader System Model UL-30 Automatically loads and unloads Production Pallets to and from Curing Racks includes Product Pallet Pushoff, Product Discharge Conveyor and Pallet Return Conveyor	26.5
2.4	Automatic Plate Style Cuber Model PSC 200 For end-of-line automatic cubing of cured products	25

SPM 30 Plant Layout



Automatic Cuber



Automatic Rack Loader/ Unloader

